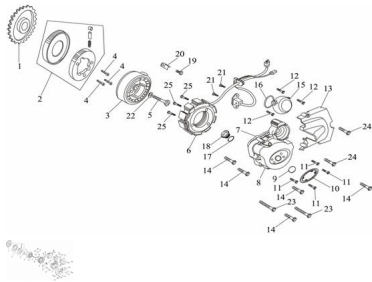


## TAPA DE CILINDRO (FX 250 SPORT)



Rating: Not Rated Yet

**Price:**

Variant price modifier:

Base price with tax:

Price with discount:

Salesprice with discount:

Sales price:

Sales price without tax:

Discount:

Tax amount:

[Ask a question about this product](#)

| Description | Ref. | Título                              | Código |
|-------------|------|-------------------------------------|--------|
|             | 1    | Tapa<br>cabeza de<br>cilindro       |        |
|             | 2    | Tornillo M6<br>x 25                 |        |
|             | 3    | Tornillo M6<br>x 25                 |        |
|             | 4    | Arandela<br>ø6                      |        |
|             | 5    | Junta tapa<br>cabeza de<br>cilindro |        |
|             | 6    | Tuerca<br>tapa<br>cabeza de         |        |

| Ref. | Título                         | Código   |
|------|--------------------------------|----------|
|      |                                | cilindro |
| 7    | Arandela<br>ø12                |          |
| 8    | Bujía                          |          |
| 9    | Tornillo M6<br>x 25            |          |
| 10   | Tubo de<br>admission           |          |
| 11   | O-ring 35 x<br>2,5             |          |
| 12   | Esparrago<br>M6 x 20           |          |
| 13   | C. Cabeza<br>de cilindro       |          |
| 14   | Tornillo M8<br>x 79            |          |
| 15   | Arandela<br>ø8 x 2             |          |
| 16   | Esparrago<br>M6 x 20           |          |
| 17   | Junta<br>cabeza de<br>cilindro |          |
| 18   | Perno guía<br>10 x 14          |          |
| 19   | O-ring 10 x<br>1,6             |          |
| 20   | Cilindro                       |          |
| 21   | Tornillo M6<br>x 25            |          |
| 22   | Junta base<br>cilindro         |          |

