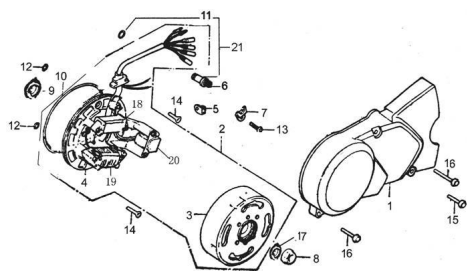


TAPA CARTER LADO VOLANTE



Rating: Not Rated Yet

Price:

Variant price modifier:

Base price with tax:

Price with discount:

Salesprice with discount:

Sales price:

Sales price without tax:

Discount:

Tax amount:

[Ask a question about this product](#)

| Description | Ref. | Título | Código |
|-------------|------|--------------------------------|----------|
| | 1 | | 44-11411 |
| | 2 | MAGNETO | 44-31100 |
| | 3 | ROTOR C ONJUNTO, MAGNETO | 44-31110 |
| | 4 | ESTATOR | 44-31210 |
| | 5 | EMBALAJE BLOQUE, NEUTRO | 44-35739 |
| | 6 | | 44-35710 |
| | 7 | PLACA AJ | 44-35721 |

MOTOR : TAPA CARTER LADO VOLANTE

| Ref. | Título | Código |
|------|---------------------------|------------|
| 8 | TUERCA M10 Ø 1,25 | 44-31311 |
| 9 | RETEN 18.9 Ø 30 Ø 5 | 44-13190 |
| 10 | O - RING 107 Ø 2 | 44-31915 |
| 11 | O - RING 7 Ø 1,7 | 44-35723 |
| 12 | O - RING 6.5 Ø 1.9 | 44-31916 |
| 13 | TORNILLO M6 Ø 12 | 44-GB/T8-6 |
| 14 | TORNILLO M6 Ø 16 | 44-GB619 |
| 15 | TORNILLO M6 Ø 28 | 44-GB/T1-8 |
| 16 | TORNILLO M6 Ø 35 | 44-GB/T1-9 |
| 17 | | 44-31312 |
| 18 | CARGA DE LA BOBINA | 44-31260 |
| 19 | | 44-31240 |
| 20 | BOBINA DE | 44-31280 |
| 21 | | 44-35720 |