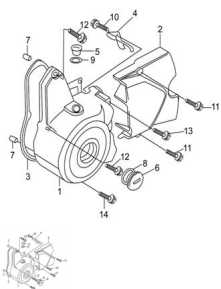


GRUPO TAPA CARTER LADO VOLANTE



Rating: Not Rated Yet

Price:

Variant price modifier:

Base price with tax:

Price with discount:

Salesprice with discount:

Sales price:

Sales price without tax:

Discount:

Tax amount:

[Ask a question about this product](#)

Description

| | Ref. | Título | Código |
|---|------|---------------------------------------|-----------------|
| 1 | | TAPA CARTER LADO VOLANTE (GRIS) | 10-11411/1P50FM |
| 2 | | TAPA PIÑÓN DUE 3V | 9-11451 |
| 3 | | JUNTA TAPA CARTER LADO VOLANTE | 10-11419/1P50FM |
| 4 | | ABRAZADERA ALAMBRE | 10-31911/1P50FM |
| 5 | | TAPON DE INSPECCION | 10-11412/1P50FM |
| 6 | | TAPON DE INSPECCION VOLANTE MAGNETICO | 10-11413/1P50FM |
| 7 | | PERNO GUÍA 8 X 12 | 10-11318/1P50FM |
| 8 | | O-RING TAPON VENTANA 27 X 2,0 | 10-11415/1P50FM |

MOTOR 3V : GRUPO TAPA CARTER LADO VOLANTE

| | Ref. | Título | Código |
|----|------|------------------------------------|-----------------|
| 9 | | O-RING TAPON INSPECCION 13,5 X 2,4 | 10-11414/1P50FM |
| 10 | | TORNILLO M6 X 16 | 10-GB/T16674 |
| 11 | | TORNILLO M6 X 28 | 10-GB/T16674-2 |
| 12 | | TORNILLO M6 X 30 | 10-GB/T16674-3 |
| 13 | | TORNILLO M6 X 50 | 10-GB/T16674-4 |
| 14 | | TORNILLO M6 X 65 | 10-GB/T16674-5 |