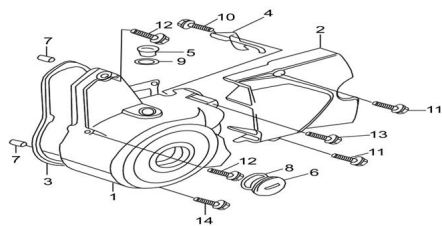


## GRUPO TAPA CARTER LADO VOLANTE



Rating: Not Rated Yet

**Price:**

Variant price modifier:

Base price with tax:

Price with discount:

Salesprice with discount:

Sales price:

Sales price without tax:

Discount:

Tax amount:

[Ask a question about this product](#)

### Description

|    | Ref. | Título                                | Código          |
|----|------|---------------------------------------|-----------------|
| 1  |      | TAPA CARTER LADO VOLANTE (GRIS)       | 10-11411/1P50FM |
| 2  |      | TAPA PIÑON (GRIS)                     | 10-11451/1P50FM |
| 3  |      | JUNTA TAPA CARTER LADO VOLANTE        | 10-11419/1P50FM |
| 4  |      | ABRAZADERA ALAMBRE                    | 10-31911/1P50FM |
| 5  |      | TAPON DE INSPECCION                   | 10-11412/1P50FM |
| 6  |      | TAPON DE INSPECCION VOLANTE MAGNETICO | 10-11413/1P50FM |
| 7  |      | PERNO GUÍA 8 X 12                     | 10-11318/1P50FM |
| 8  |      | O-RING TAPON VENTANA 27 X 2,0         | 10-11415/1P50FM |
| 9  |      | O-RING TAPON INSPECCION 13,5 X 2,4    | 10-11414/1P50FM |
| 10 |      | TORNILLO M6 X 16                      | 10-GB/T16674    |
| 11 |      | TORNILLO M6 X 28                      | 10-GB/T16674-2  |
| 12 |      | TORNILLO M6 X 30                      | 10-GB/T16674-3  |
| 13 |      | TORNILLO M6 X 50                      | 10-GB/T16674-4  |
| 14 |      | TORNILLO M6 X 65                      | 10-GB/T16674-5  |

