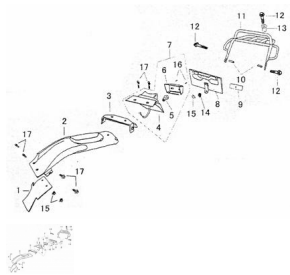


GRUPO PORTAPATENTE



Rating: Not Rated Yet

Price:

Variant price modifier:

Base price with tax:

Price with discount:

Salesprice with discount:

Sales price:

Sales price without tax:

Discount:

Tax amount:

[Ask a question about this product](#)

Description

| Ref. | Título | Código |
|------|--------------------------------------|----------------|
| 1 | ALETA GUARDABARRO TRASERO | 19-63112 |
| 2 | GUARDABARRO TRASERO | 19-63131 |
| 3 | SOPORTE SUPERIOR GUARDABARRO TRASERO | 19-63981 |
| 4 | SOPORTE FAROL TRASERO | 19-63151 |
| 5 | LAMPARA 12V-12/5W(STOP) | 19-GB15766.1-3 |
| 6 | MICA FAROL TARSERO | 19-33711 |
| 7 | FAROL TRASERO ARMADO | 19-33700 |
| 8 | PORTAPATENTE | 19-63710 |
| 9 | REFLECTOR TRASERO | 19-33820 |

ESTRUCTURA : GRUPO PORTAPATENTE

| | Ref. | Título | | Código |
|----|------|------------------------------------|-----------------|--------|
| 10 | | BUJE PORTAPAQUETE TRASERO | 19-93612 | |
| 11 | | PORTAPAQUETE TRASERO | 19-45400 | |
| 11 | | PORTAPAQUETE TRASERO ZTT (3) | 38-45400 | |
| 12 | | TORNILLO M6 X 60 | 19-GB/T674.1-21 | |
| 13 | | BUJE PASANTE PORTAEQUIPAJE TRASERO | 19-45412 | |
| 14 | | ARANDELA 6 | 19-GB/97.1 | |
| 15 | | TUERCA M6 | 19-GB/T6177.1 | |
| 16 | | TORNILLO ST 3.8 X 30 | 19-GB/T845-4 | |
| 17 | | TORNILLO M6 X 16 | 19-GB/T674.1-22 | |

